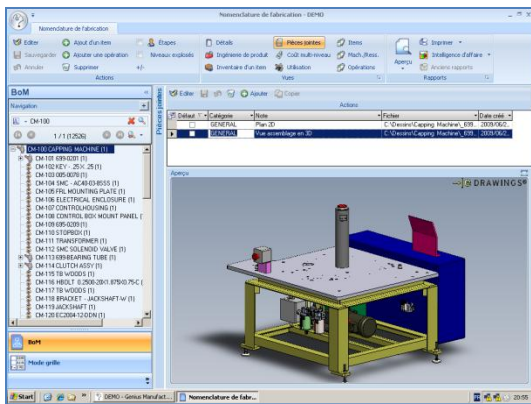




Module

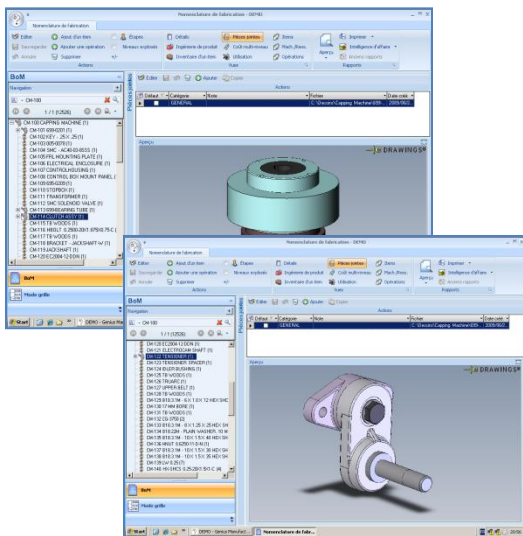
BOM – BILL OF MANUFACTURING

Module Summary



This is the heart of the Genius integrated manufacturing system. BOMs (Bills of Manufacturing) will link estimating, planning, procurement, production, all the elements that flow through Genius Manufacturing.

Our quick and simple interface allows you to build your products using a toolset purpose-built for efficiencies. These include the drag and drop capabilities through the visual tree with views to all the information at every level. Everyone involved will understand, quickly and accurately, the makeup of your products, regardless of complexity.



Create multi-level BOMs to as many levels as needed. For quick access, the information you need is at eliminating the need to go searching for it.

This module becomes the reference point for your products. Document management capabilities bring in related and necessary drawings, models, compliance and other documents.

[View the video](#)

